

1 ✓ No. 280471

2

3

COUNTY OF STEELE

TO

PUBLIC

INFORMATIONAL ONLY STEELE COUNTY RECORDER

Date 2-10-2000

Time 3:00 P.M

Recording Fee: \$ NC

Return To:

Laura Thake - Steele County Auditor

\_\_\_\_\_

\_\_\_\_\_

\_\_\_\_\_

RF: \_\_\_\_\_

PB: \_\_\_\_\_

Envelope ( \_\_\_\_\_ )



COUNTY RECORDER  
STEELE COUNTY, MN

Certified, filed and/or recorded Fee:  
on 02/10/2000 at 3:00 pm

Well Certificate  
[ ] Received  
[ ] Not required  
Rose P. Branderhorst,  
Steele County Recorder  
by Ad, Deputy

INFORMATIONAL ONLY

**RESOLUTION PLACING EASTSIDE CORRIDOR  
ON OFFICIAL MAP**

Commissioner Peterson offered the following Resolution and moved its adoption:

**WHEREAS:** Steele County and the City of Owatonna completed a traffic study and found the need for a roadway east of Owatonna running in a north-south direction for approximately four miles and,

**WHEREAS:** The alignment of the roadway was arrived at after considering environmental, social, cultural and economic impacts and,

**WHEREAS:** An Environmental Assessment Worksheet was completed and resulted in the negative declaration on the need for an Environmental Impact Statement and,

**WHEREAS:** A public hearing was scheduled and held and the notice of the public hearing was published and mailed pursuant to Minnesota Statutes.

**NOW THEREFORE BE IT RESOLVED:** That the Steele County Board of Commissioners ordain and adopt the placement of the Eastside Corridor on the Official Map and,

**BE IT FURTHER RESOLVED:** That the Steele County Surveyor shall prepare the Official Map, attest to it and record it with the Steele County Recorder.

Commissioner Christianson seconded the adoption of the resolution, and it was declared upon the following vote: Ayes: 4 Nays: 1

Adopted: June 22, 1999

**STEELE COUNTY BOARD OF COMMISSIONERS**

BY: *Scott Peterson*

ATTEST:

*Laura Shirke*  
Steele County Auditor

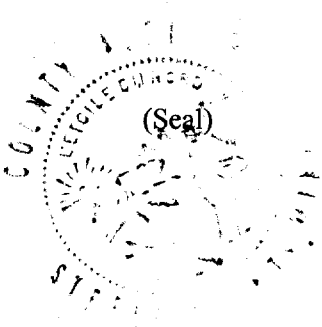
**CERTIFICATION**

I hereby certify that the above is a true and correct copy of a Resolution duly passed, adopted, and approved by the County Board of said County on the 22nd day of June, 1999.

*Laura Shirke*  
Steele County Auditor

Filed with the Steele County Recorder's Office on the 10<sup>th</sup> day of February, 2000, as Document No. 280471 at 3:00 P.M. IN BOOK 13 OF PLATS PAGE 259.

**ROSE P. BRANDERHORST**, By: *Deane K. Larson, Deputy*  
Steele County Recorder



S 89°46'26" E 522.90

16.5' AT&T FIBER OPTIC  
RIGHT-OF-WAY EASEMENT

HERBERT  
& DORIS  
SWANSON

FLOOD FRINGE

E. LINE OF  
W1/2 OF NW1/4

W. LINE OF  
E1/2 OF NW1/4

SEC

2723.51  
N 00°31'54" W

CLARENCE &  
BETTY SCHWARTZ

WALKER DRIVE

JOHN &  
SYLVIA PROKOPEC

150' EAST  
SIDE CORRIDOR

75'

HILL DRIVE

DANE ROAD

N 88°52'59" E 522.88

261.83  
S 00°31'54" E



N 88°52'59" E 522.88

261.83  
S 00°31'54" E

R=1900.00  
Δ=29°11'02"  
A=669.32

E. LINE OF  
W1/2 OF SW1/4

W. LINE OF  
E1/2 OF SW1/4

107 - 20

KENNETH  
ANDERSON

SEC

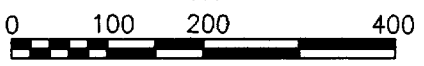
CLARENCE &  
BETTY SCHWARTZ

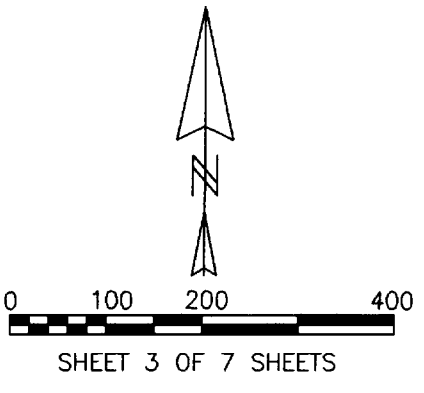
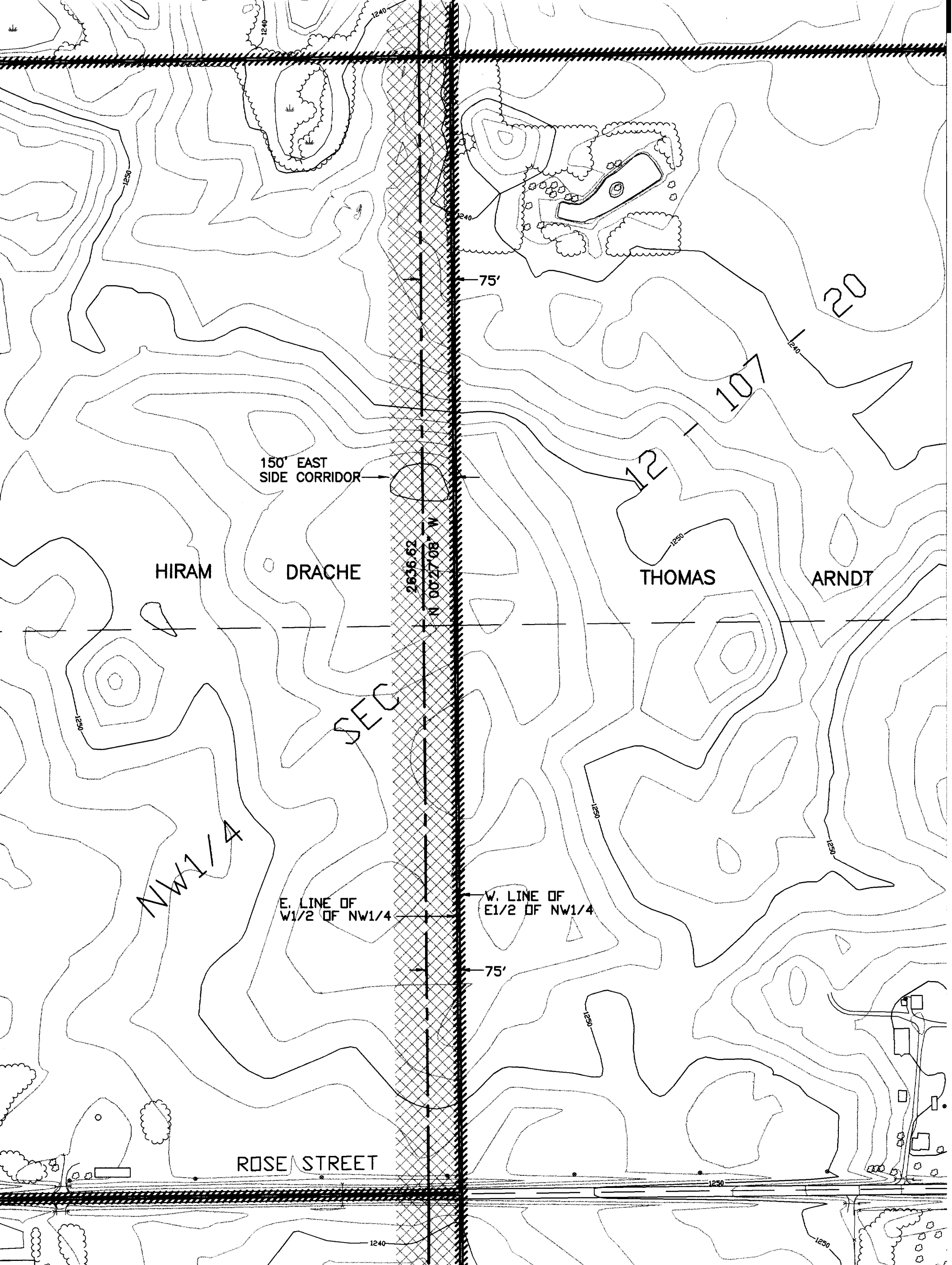
SW1/4

S 78°39'08" W  
1120.42

R=1900.00  
Δ=19°41'57"  
A=653.25

16.5' AT&T FIBER OPTIC  
RIGHT-OF-WAY EASEMENT





ROSE STREET

JOSEPH &  
LORRAINE PARTRIDGE

THOMAS ARNDT

SEC  
ANNA

SCHLINGER

SW 1/4

E. LINE OF  
W1/2 OF SW1/4

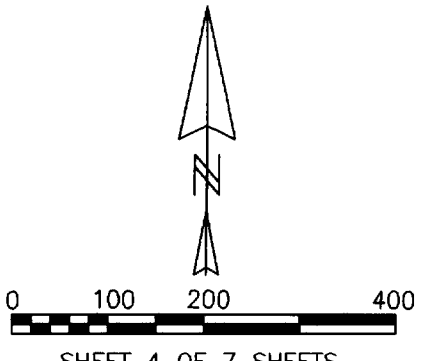
W. LINE OF  
E1/2 OF SW1/4

150' EAST  
SIDE CORRIDOR

SCHOOL ST.

N 00°08'25" E  
1322.82

12 - 107 - 20



150' EAST SIDE CORRIDOR

SCHOOL ST.

MARCELLA A.

MEIXNER

KEVIN

DEML

1225.69  
S 08°02'55" E

75'

E. LINE OF  
W1/2 OF NW1/4

W. LINE OF  
E1/2 OF NW1/4

13

107 - 20

S 89°23'15" W 77.64

ALLAN

RADEL

SEC

R=1900.00  
Δ=15°08'16"  
A=501.99

S 15°05'21" W  
370.65

NW1/4

ALLAN

RADEL

S 89°46'28"  
225.09 E

N 69°54'35" W  
253.20

R=1867.40  
Δ=21°13'52"  
A=691.97

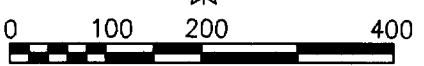
CHICAGO & NORTHWESTERN R.R.

CUMULUS BROADCASTING INC.

300.55  
N 89°28'16" E

CD. RD. 71

CD. RD. 80



300.55  
N 89°28'16" E

CO. RD. 71

150' EAST  
SIDE CORRIDOR

W. LINE OF  
E1/2 OF SW1/4

E. LINE OF  
W1/2 OF SW1/4

13 - 107 - 20

KEITH & EVELYN WANDREY

PICHNER

SEC

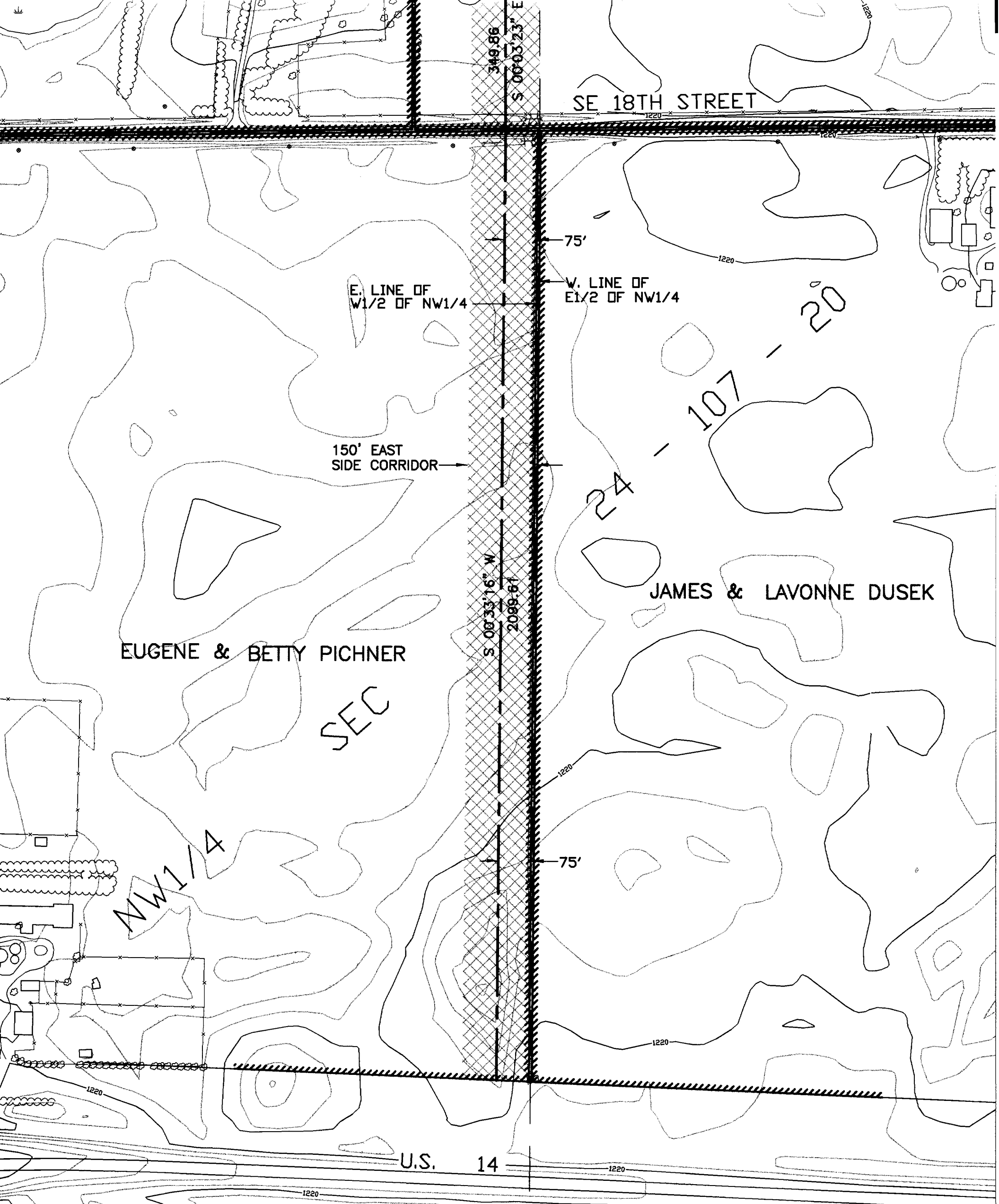
SW1/4

R=2824.51  
Δ=06°05'08"  
A=300.00

349.86  
S 00°03'23" E

SE 18TH STREET

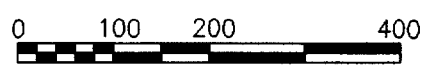




THIS MAP PREPARED AND RECORDED PURSUANT TO SECTION 394.35 AND 394.361 OF THE STATUTES OF THE STATE OF MINNESOTA.

This is to certify that I, John C. Hosfield, Steele County Surveyor, have prepared this Official Map of the Eastside Corridor according to the resolution adopted on June 22, 1999 by the Steele County Board of Commissioners and recorded on February 10, 2000 as document number 280471 in the Office of the Steele County Recorder.

*John C. Hosfield* 2/15/00  
 John C. Hosfield  
 Steele County Surveyor  
 Registration No. 15231



SHEET 7 OF 7 SHEETS

SURVEY			
EAST SIDE CORRIDOR			
PART OF SECTIONS 1, 12, 13 & 24 T 107 N, R 20 W, STEELE COUNTY, MN			
HOSFIELD & ASSOCIATES 415 WEST NORTH STREET OWATONNA, MINNESOTA 55060 PHONE 507-451-4598 FAX 507-451-1396			
SCALE 1"=200'	DWG BY BLK	FEBRUARY 2000	1748