

A000366307

OFFICE OF THE COUNTY RECORDER
STEELE COUNTY, MINNESOTA

CERTIFIED, FILED, AND/OR RECORDED ON
08/28/2009 10:58AM

WELL CERTIFICATE: RECEIVED ()

PAGES: 8 FEES: \$0.00

AVIS E. LEWISON
STEELE COUNTY RECORDER

BY DR DEPUTY

1 2 3 4

1
2
3

NO: A000366307

PLAT OF: _____

DATED: February 8, 2005

PLATTED FROM: _____

DESCRIPTION: Parts of 6, 7, 18 + 19 - 107-20

DATE August 28, 2009

TIME 10:58 AM

BOOK 13 OF PLATS, PAGE 396

RECORDING FEE \$ NC

RF: Jones, Naugh + Hayfield

RT: STAYS ON FILE

PB: N/C

4000366307

OFFICE OF THE COUNTY RECORDER
STEELE COUNTY, MINNESOTA

CERTIFIED, FILED, AND/OR RECORDED ON
08/28/2009 10:58AM

WELL CERTIFICATE: RECEIVED ()

PAGES: 9 FEES: \$0.00

AVIS E. LEWISON
STEELE COUNTY RECORDER

BY AK DEPUTY

RESOLUTION NO. 05-12 1 ✓ 2 / 3 4

**RESOLUTION PLACING BELTLINE CORRIDORS
ON THE STEELE COUNTY OFFICIAL MAP**

WHEREAS: Steele County, the City of Owatonna and the Minnesota Department of Transportation have completed a U.S. Highway 14-Owatonna Beltline Study and found the need for east, north, west and south beltlines; and

WHEREAS: The alignment of the beltlines were arrived at after considering environmental, historical, social, cultural and economic impacts; and

WHEREAS: A Public Hearing was scheduled and held and notice of the Public Hearing was published pursuant to Minnesota Statutes 394.26.

NOW THEREFORE BE IT RESOLVED: That the Steele County Board of Commissioners ordain and adopt the placement of the east beltline options I and II, the north beltline, west beltline and south beltline corridors on the Official Map; and

BE IT FURTHER RESOLVED: That the Steele County Surveyor shall prepare the Official Map, attest to it, and record it with the Steele County Recorder.

Adopted: February 8, 2005

Steele County Board of Commissioners

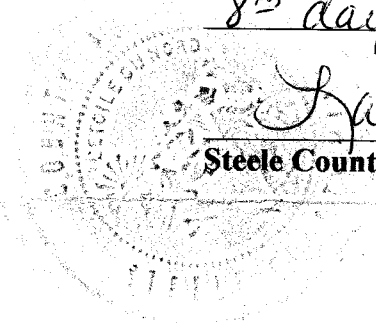
By Tom Shu
Board Chair

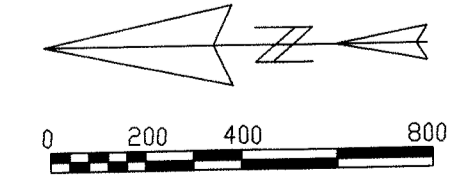
ATTEST:
Laura Horke
Steele County Auditor

CERTIFICATION

I hereby certify that the above is a true and correct copy of a Resolution duly passed, adopted and approved by the County Board of said County on the 8th day of February, 2005.

Laura Horke
Steele County Auditor



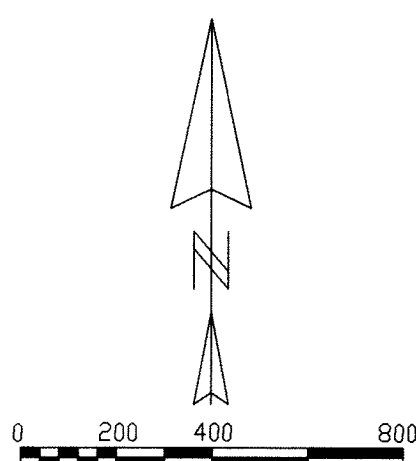
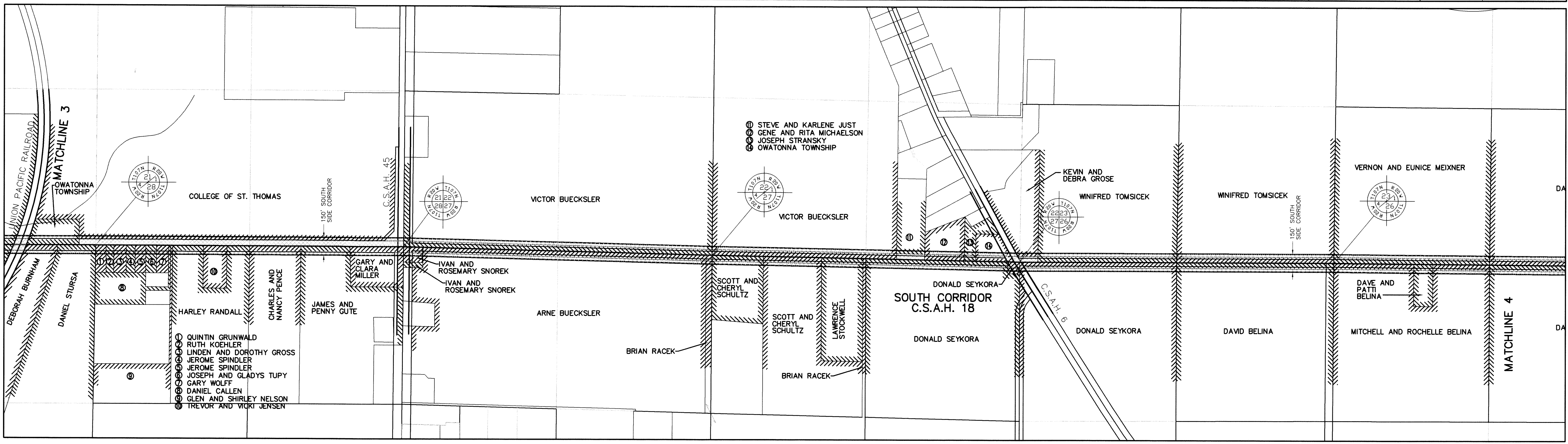
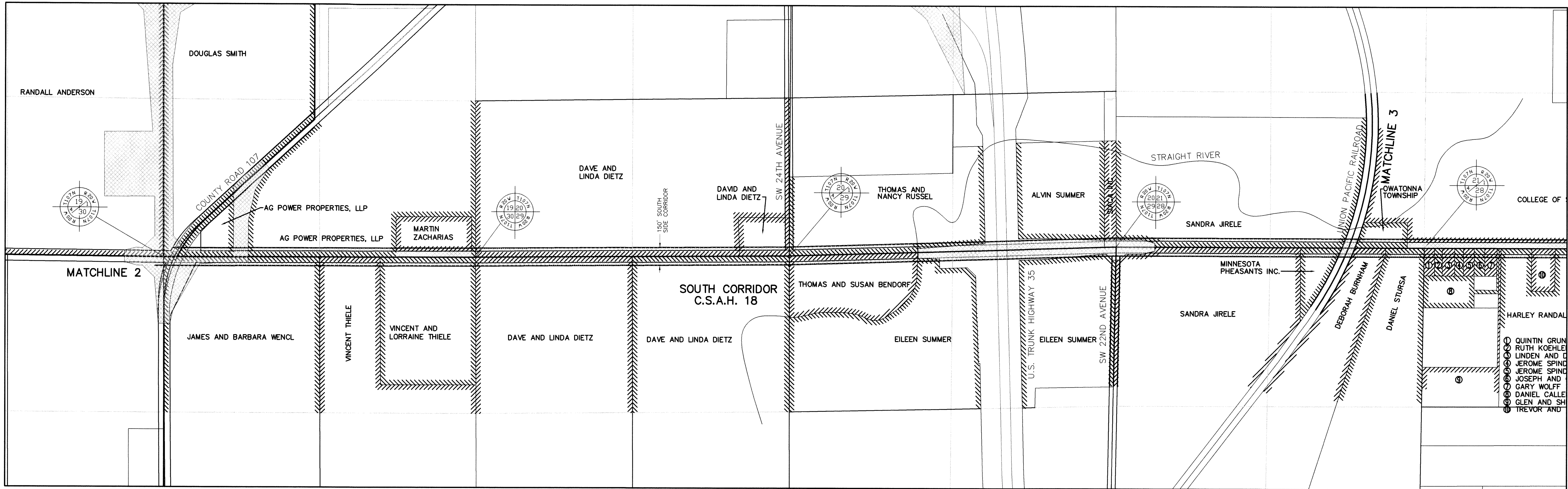


PROPERTY OWNERS AS SHOWN WERE OBTAINED FROM THE STEELE COUNTY WEB SITE

10000366387
 OFFICE OF THE COUNTY RECORDER
 STEELE COUNTY, MINNESOTA
 CERTIFIED, FILED, AND/OR RECORDED ON
 AUG 28 2009 10:54 AM
 In Book 13 Plats, page 396.
 WELL CERTIFICATE: RECEIVED 1
 PAGES: 8 FEES: \$0.00
 ANIS E. LEWISON
 STEELE COUNTY RECORDER
 BY: *Al*

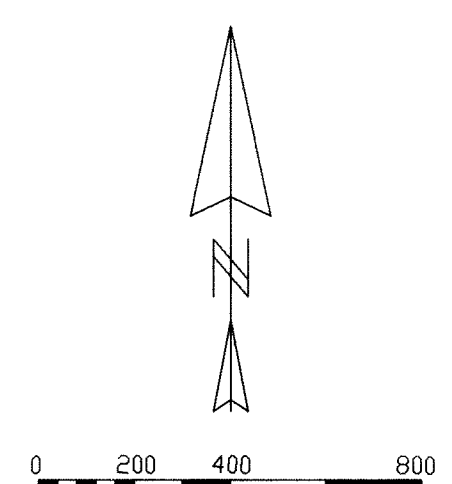
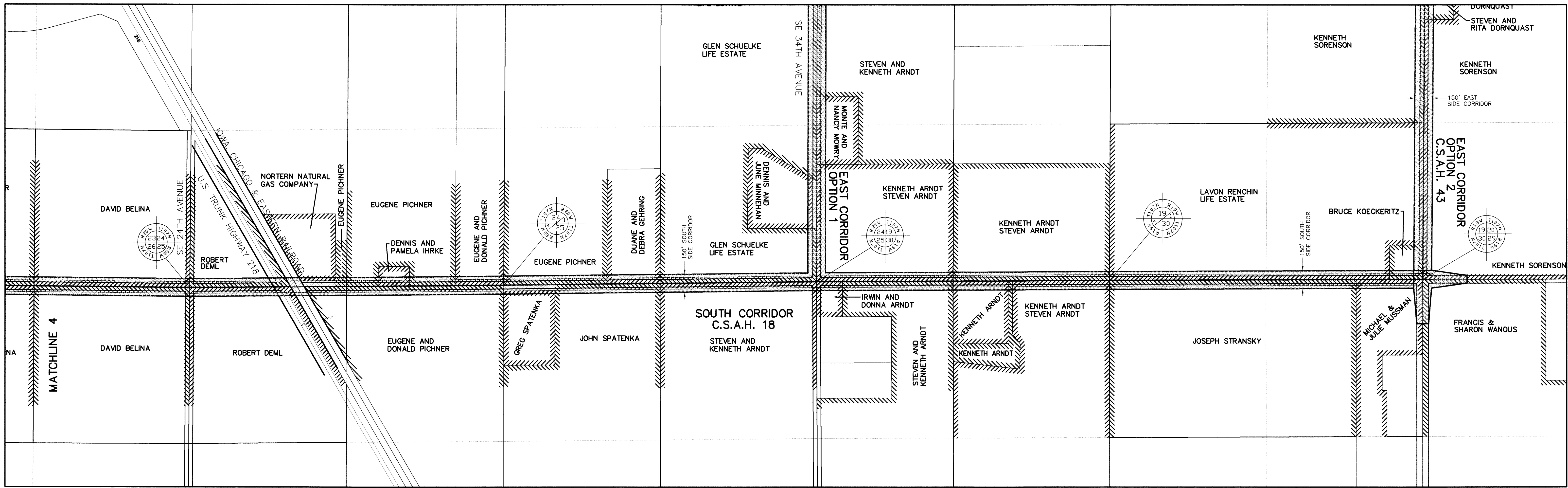
THIS MAP PREPARED AND RECORDED PURSUANT TO SECTION 394.35 AND 394.361 OF THE STATUTES OF THE STATE OF MINNESOTA.
 This is to certify that I, John C. Hosfield, Steele County Surveyor, have prepared this Official Map of the east beltline options 1 and 2, the north beltline, west beltline and south beltline corridors according to the resolution adopted on February 8, 2005 by the Steele County Board of Commissioners and recorded on August 28, 2009 as document number 1000344307 in the Office of the Steele County Recorder.
John C. Hosfield
 John C. Hosfield
 Steele County Surveyor
 License No. 15231

SURVEY	
WEST CORRIDOR	
PART OF SECTIONS 6, 7, 18 & 19-107-20 STEELE COUNTY, MN	
JONES, HAUGH & HOSFIELD PROFESSIONAL ENGINEERS & LAND SURVEYORS	
415 WEST NORTH ST OWATONNA, MN 55060 PH (507) 451-4598 FAX (507) 451-1596	515 S WASHINGTON AVE ALBERT LEA, MN 56007 PH (507) 373-4876 FAX (507) 373-1839
SCALE 1"=400'	DWG BY BLK AUGUST 2009
	FILE NO 1900 JOB NO. 09-1079 SHEET 1 OF 7 SHEETS



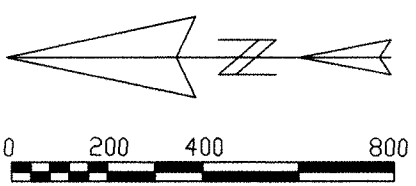
PROPERTY OWNERS AS SHOWN WERE OBTAINED FROM THE STEELE COUNTY WEB SITE

SURVEY	
SOUTH CORRIDOR	
PART OF SEC 31-108-20 & 6,7,18,19, 30-107-20, STEELE COUNTY, MN	
JONES, HAUGH & HOSFIELD	
PROFESSIONAL ENGINEERS & LAND SURVEYORS	515 S WASHINGTON AVE
415 WEST NORTH ST	OWATONNA, MN 55060
PH (507) 451-4598	PH (507) 373-4876
FAX (507) 451-1396	FAX (507) 373-1839
SCALE 1"=400'	DWG BY BLK
AUGUST 2009	FILE NO. 1900
	JOB NO. 09-1079
	SHEET 2 OF 7 SHEETS



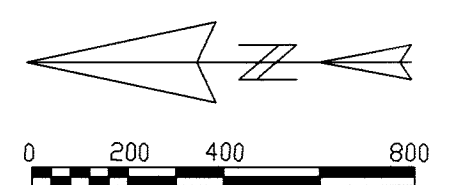
PROPERTY OWNERS AS SHOWN WERE OBTAINED FROM THE STEELE COUNTY WEB SITE

SURVEY	
SOUTH CORRIDOR	
PART OF SEC 19,20,29 & 30-107-19 & 19,20,21,22,23,24, 30,25,26,27,28,29-107-20, STEELE COUNTY, MN	
JONES, HAUGH & HOSFIELD	
PROFESSIONAL ENGINEERS & LAND SURVEYORS	515 S WASHINGTON AVE
415 WEST NORTH ST	ALBERT LEA, MN 56007
OWATONNA, MN 55060	PH (507) 373-4876
PH (507) 451-4598	FAX (507) 373-1839
FAX (507) 451-1396	
SCALE 1"=400'	DWG BY BLK
AUGUST 2009	FILE NO. 1900
	JOB NO. 09-1079
	SHEET 3 OF 7 SHEETS



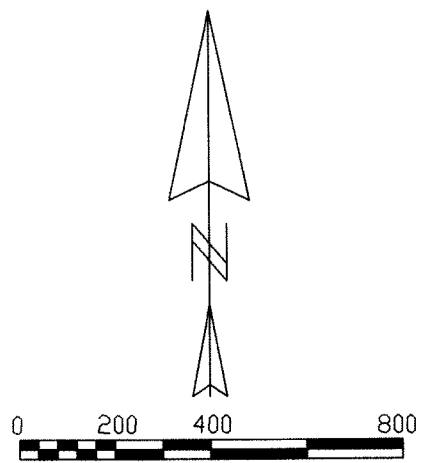
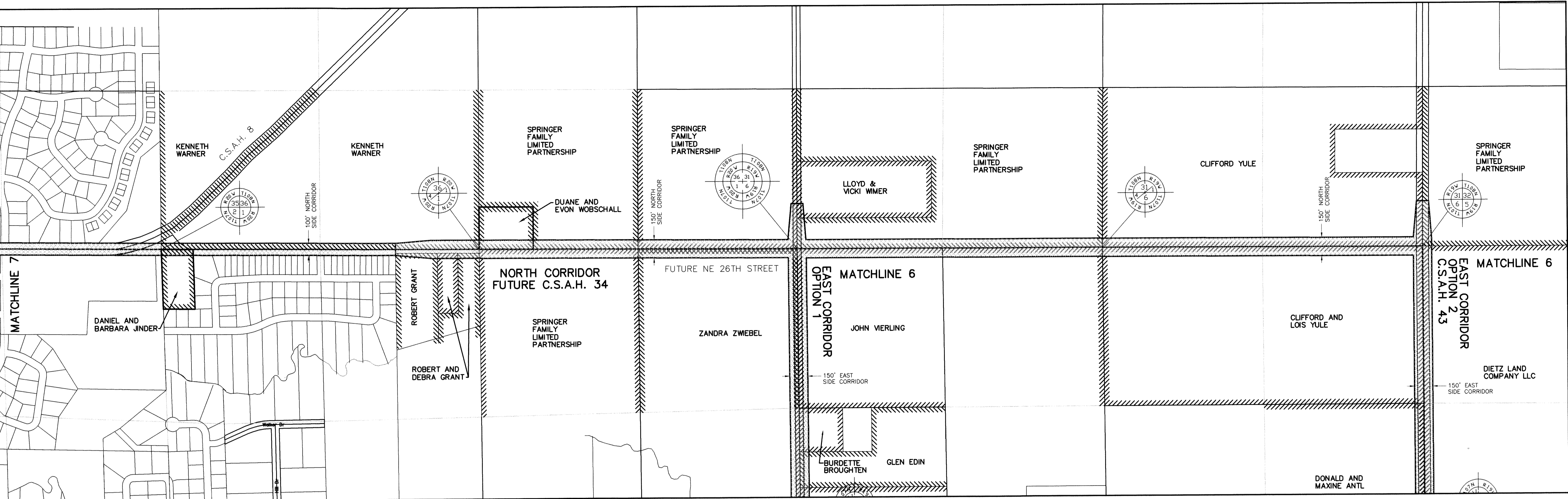
PROPERTY OWNERS AS SHOWN WERE OBTAINED FROM THE STEELE COUNTY WEB SITE

SURVEY	
EAST CORRIDOR	
PART OF SEC 12, 13, 24 & 25-107-20 & 7,8,17,18,19, 20, 29 & 30-107-19, STEELE COUNTY, MN	
JONES, HAUGH & HOSFIELD	
PROFESSIONAL ENGINEERS & LAND SURVEYORS	
415 WEST NORTH ST OWATONNA, MN 55060 PH (507) 451-4598 FAX (507) 451-1396	515 S WASHINGTON AVE ALBERT LEA, MN 56007 PH (507) 373-4876 FAX (507) 373-1839
SCALE 1"=400'	DWG BY BLK
AUGUST 2009	FILE NO. 1900
	JOB NO. 09-1079
	SHEET 4 OF 7 SHEETS



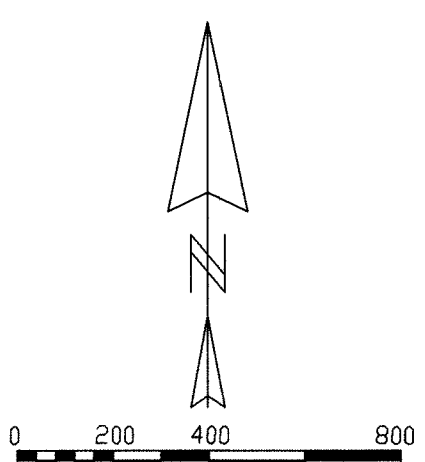
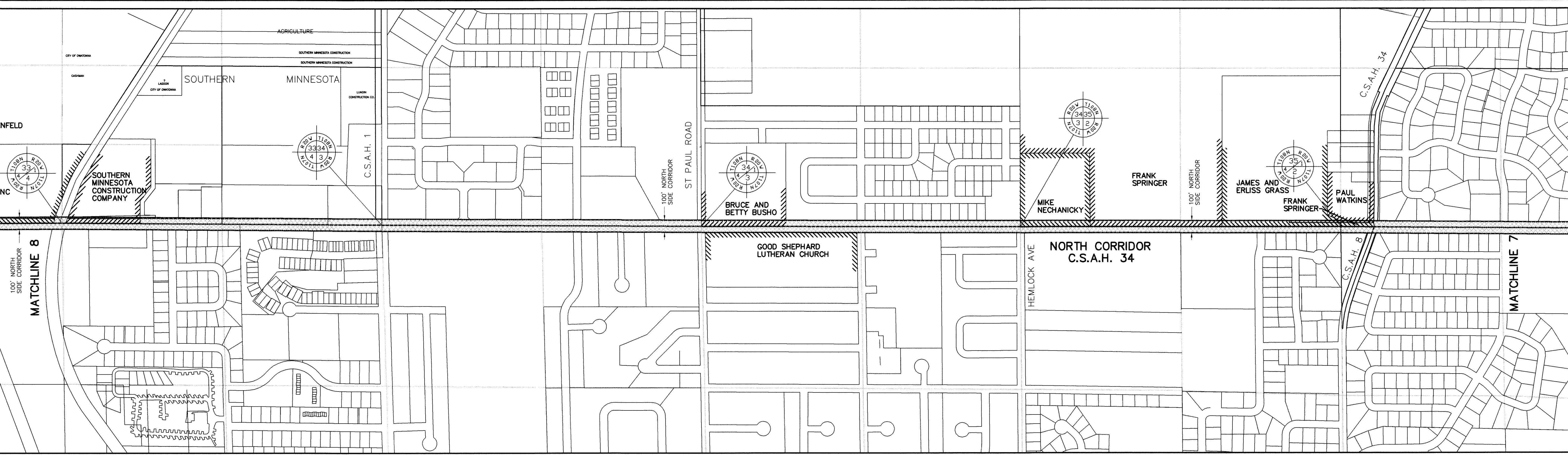
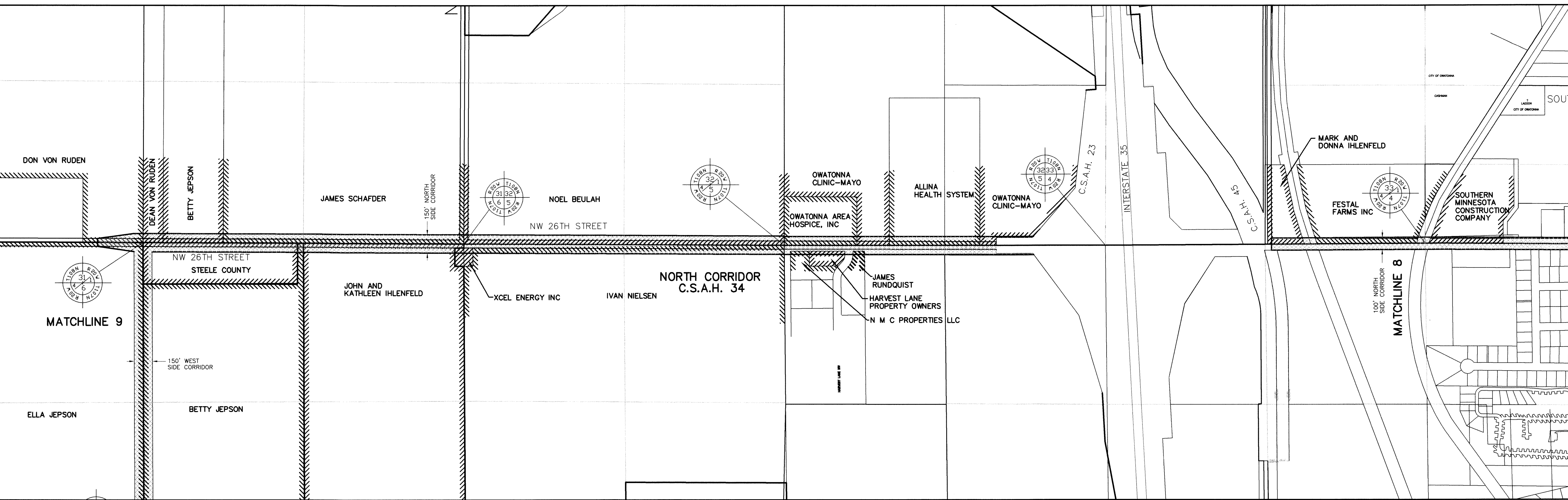
PROPERTY OWNERS AS SHOWN WERE OBTAINED FROM THE STEELE COUNTY WEB SITE

SURVEY	
EAST CORRIDOR	
PART OF SEC 36-108-20 & 31-108-19 & 1,12 & 13-107-20 & 5,6,7,8,17 & 18-107-19, STEELE COUNTY, MN	
JONES, HAUGH & HOSFIELD	
PROFESSIONAL ENGINEERS & LAND SURVEYORS	
415 WEST NORTH ST OWATONNA, MN 55060 PH (507) 451-4598 FAX (507) 451-1396	515 S WASHINGTON AVE ALBERT LEA, MN 56007 PH (507) 373-4876 FAX (507) 373-1839
SCALE 1"=400'	DWG BY BLK
AUGUST 2009	FILE NO 1900
	JDB NO 09-1079
	SHEET 5 OF 7 SHEETS



PROPERTY OWNERS AS SHOWN WERE OBTAINED FROM THE STEELE COUNTY WEB SITE

SURVEY			
NORTH CORRIDOR			
PART OF SEC 25 & 36-108-20 & 1 & 2-107-20 & 31 & 32-108-19 & 6 & 5-107-19, STEELE COUNTY, MN			
JONES, HAUGH & HOSFIELD			
PROFESSIONAL ENGINEERS & LAND SURVEYORS			
415 WEST NORTH ST OWATONNA, MN 55060 PH (507) 451-4588 FAX (507) 451-1396			515 S WASHINGTON AVE ALBERT LEA, MN 56007 PH (507) 373-4876 FAX (507) 373-1839
SCALE 1"=400'	DWG BY BLK	AUGUST 2009	FILE NO. 1900 JOB NO. 09-1079 SHEET 6 OF 7 SHEET



PROPERTY OWNERS AS SHOWN WERE OBTAINED FROM THE STEELE COUNTY WEB SITE

SURVEY	
NORTH CORRIDOR	
PART OF SEC 31,32 & 33-108-20 & 4,5 & 6-107-20, STEELE COUNTY, MN	
JONES, HAUGH & HOSFIELD	
PROFESSIONAL ENGINEERS & LAND SURVEYORS	
415 WEST NORTH ST OWATONNA, MN 55060 PH (507) 451-4596 FAX (507) 451-1396	515 S WASHINGTON AVE ALBERT LEA, MN 56007 PH (507) 373-4876 FAX (507) 373-1839
SCALE 1"=400'	DWG BY BLK AUGUST 2009
FILE NO. 1900	JOB NO. 09-1079
SHEET 7 OF 7 SHEETS	